

*The*  
WOODWARD

GENEVA



*the*  
WOODWARD  
GENEVA

OETKER COLLECTION  
Masterpiece Hotels

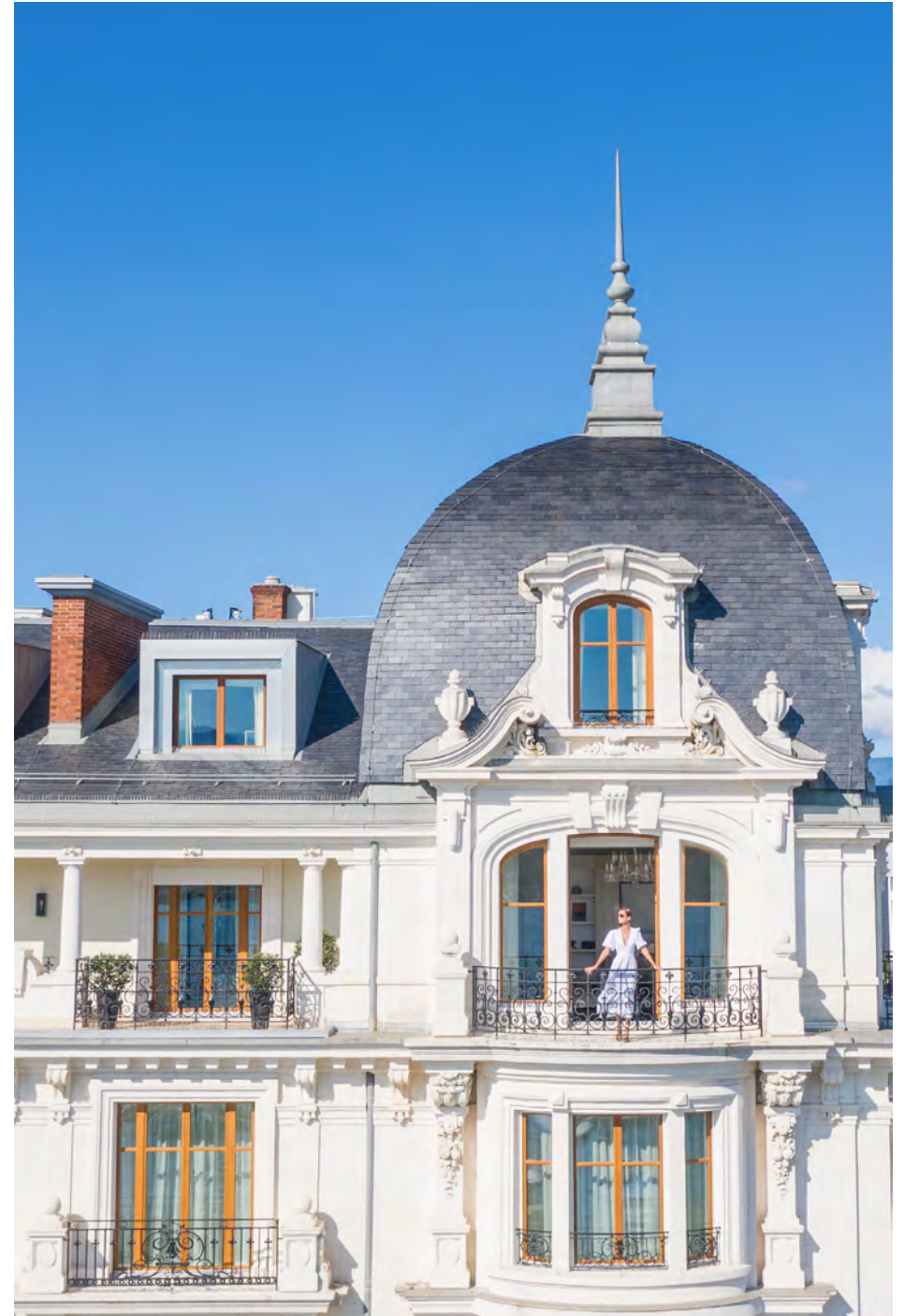


## DESTINATION

### Geneva's lakeside home of haute living



Facing the crystal blue of Lake Geneva, The Woodward inhabits a post-Haussmann style building erected in 1901 by architect François Durel. Take one step inside and the hotel's elegant, belle époque façade instantly gives way to an opulent interior completely re-imagined by architect Pierre-Yves Rochon. Home to exquisite dining from L'Atelier Robuchon and Le Jardinier, as well as a two-floor well-being oasis including Spa Guerlain, The Woodward is Geneva's first all-suite hotel, a lakeside retreat suspended between nature and the city.



## HOTEL & LOCATION

### Naturally Urban



Situated on Quai Wilson, The Woodward's lakefront location benefits from panoramic views of the water and the French Alps, including Mont Blanc. Just 20 minutes by car from Geneva International Airport and a 10-minute drive from the Geneva Cornavin railway station, the hotel is located within close distance to the old town, Jardin Anglais and the Rue du Rhone shopping district.



## ROOMS & SUITES

### Variations of elegance



Each of The Woodward's suites possesses its own unique character by way of individual design details and signature flourishes – from curated interiors and original artwork to gas fireplaces and fully equipped experience bars.

21 suites present a full lake view and the remaining offer partial views of the breathtaking natural backdrop.



## ROOMS & SUITES

### Presidential Suite



The Presidential Suite is designed for absolute comfort and total privacy. The expansive living room features a large wraparound sofa and twin chairs for relaxing by the fire. Separated by French doors is a dining room with a long table and space for up to 10. A side-facing loggia extends the entire length of the living room and dining room with beautiful views over the marina and Lake Geneva. The bedroom is separated from the living spaces by a long hallway and walk-through dressing room and is designed with royal blue tapestries by Rubelli and Lelièvre. The immense, light-filled bathroom is the largest in the hotel. The Presidential Suite is ideal for heads of state and political delegations and can be adjoined with the Woodward Suite. Both the living room and dining room can be privatised for special events.



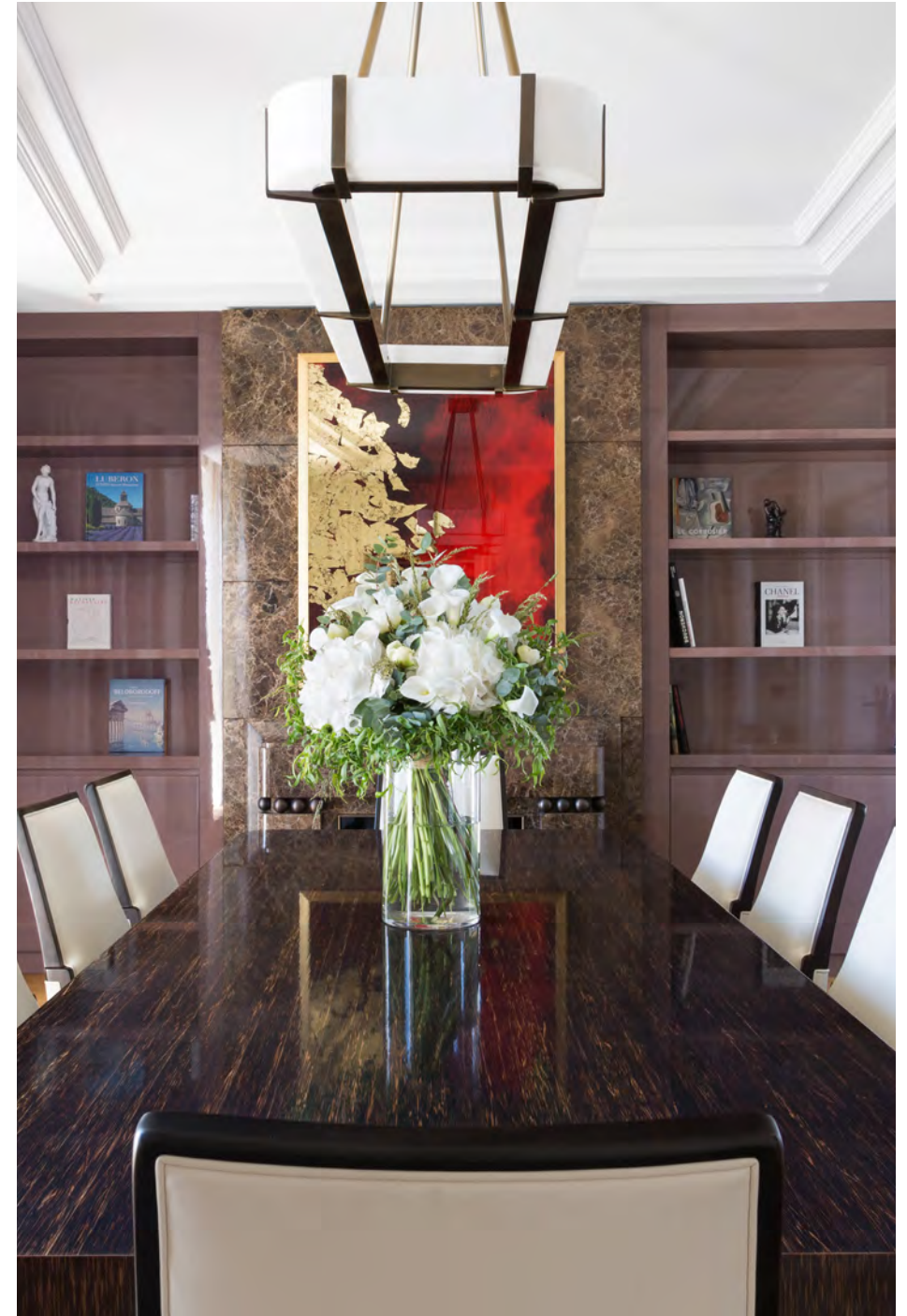


## ROOMS & SUITES

### Royal Suite



The largest in the hotel, the Royal Suite can be accessed directly by a private elevator. A large private dining room features seating for up to 10, a marble fireplace and two balconies overlooking Lake Geneva and the French Alps. The expansive living room offers two additional lake-facing balconies, a fireplace, generous seating and a Baccarat crystal chandelier. Just off the living room is a kitchenette that includes a separate entry. The bedroom is reached through a long, walk-through dressing area and is designed with a writing desk by Nicolas Aubagnac, handmade marquetry wood panelling and an immense marble en-suite bathroom. The Royal Suite can be adjoined with the Executive Suite and Deluxe Suite.





## RESTAURANTS & BARS

### A culinary destination



Overseen by Executive Chef Olivier Jean, L'Atelier Robuchon and Le Jardinier establish a delicious contrast for The Woodward's two restaurants. Low-lit and chic, L'Atelier seduces the palate with Joël Robuchon's endlessly inventive tasting menu, The Woodward features two bars, a tearoom and a cigar lounge.



## RESTAURANTS & BARS

### L'Atelier Robuchon



After 7 years as Executive Chef of L'Atelier in Taipei, Chef Olivier Jean is at the helm of the kitchens at The Woodward. L'Atelier Robuchon features the legendary chef's open kitchen concept, creating a theatrical dining experience for 36 guests seated around the counter, as well as two dining rooms that can be privatised. After Paris, Tokyo, New York, Shanghai, Las Vegas and Miami, Geneva welcomes the first and only Swiss address for the French chef.



## RESTAURANTS & BARS

### Le Jardinier



Le Jardinier is located in the heart of the hotel and features two large verandas attached to the post-Haussmann façade, overlooking the picturesque Geneva harbour. With its international experience, our Executive Chef Olivier Jean adds his talent to this new address which will surprise with dishes where vegetables play a starring role, many of which are vegan, dairy and gluten-free.





## SPA & WELLNESS

### An oasis of wellbeing



The Woodward's 1,200-square-metre sanctuary for wellbeing is split over 2 floors and boasts a 21-metre indoor swimming pool, a state-of-the-art fitness room, two saunas, two steam rooms, two Swedish baths and one hot tub. Guerlain Spa at The Woodward offers a thorough menu of treatments, performed by Guerlain beauty experts in the spa's six wellness suites, including one designed for couples.

## SPA & WELLNESS

### Club Woodward, the new exclusive sports and wellness address



Club Woodward offers a yearly membership programme including unlimited access to the Spa and fitness facilities, a 60-minute treatment, an afternoon tea for two and much more.





## CONTACT

Quai Wilson 37, 1201 Genève, Switzerland  
reservations.twg@oetkercollection.com  
Phone: +41 22 901 3700

OETKER COLLECTION  
Masterpiece Hotels